

# CHAPTER -2

## PLANTS AROUND US

CLASS-III



# PARTS OF PLANT

We know that a plant has different parts like root, stem, branches, leaves, flowers and fruits. We have learnt about the leaf in some detail in the previous class.

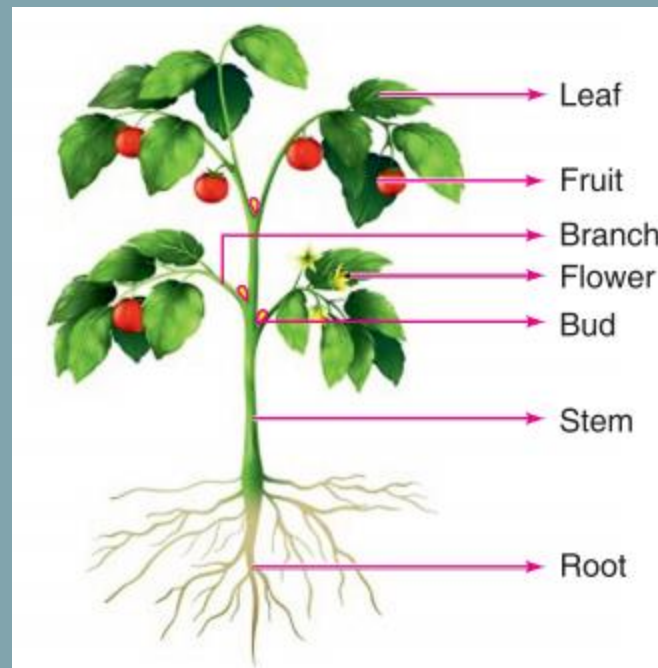


FIG. (a)



# PARTS & FUNCTION OF PLANTS

## PARTS

## FUNCTION



**It fixes the plant in the soil.**



**It carries all the other parts of the shoot.**



**It makes food for the plant.**



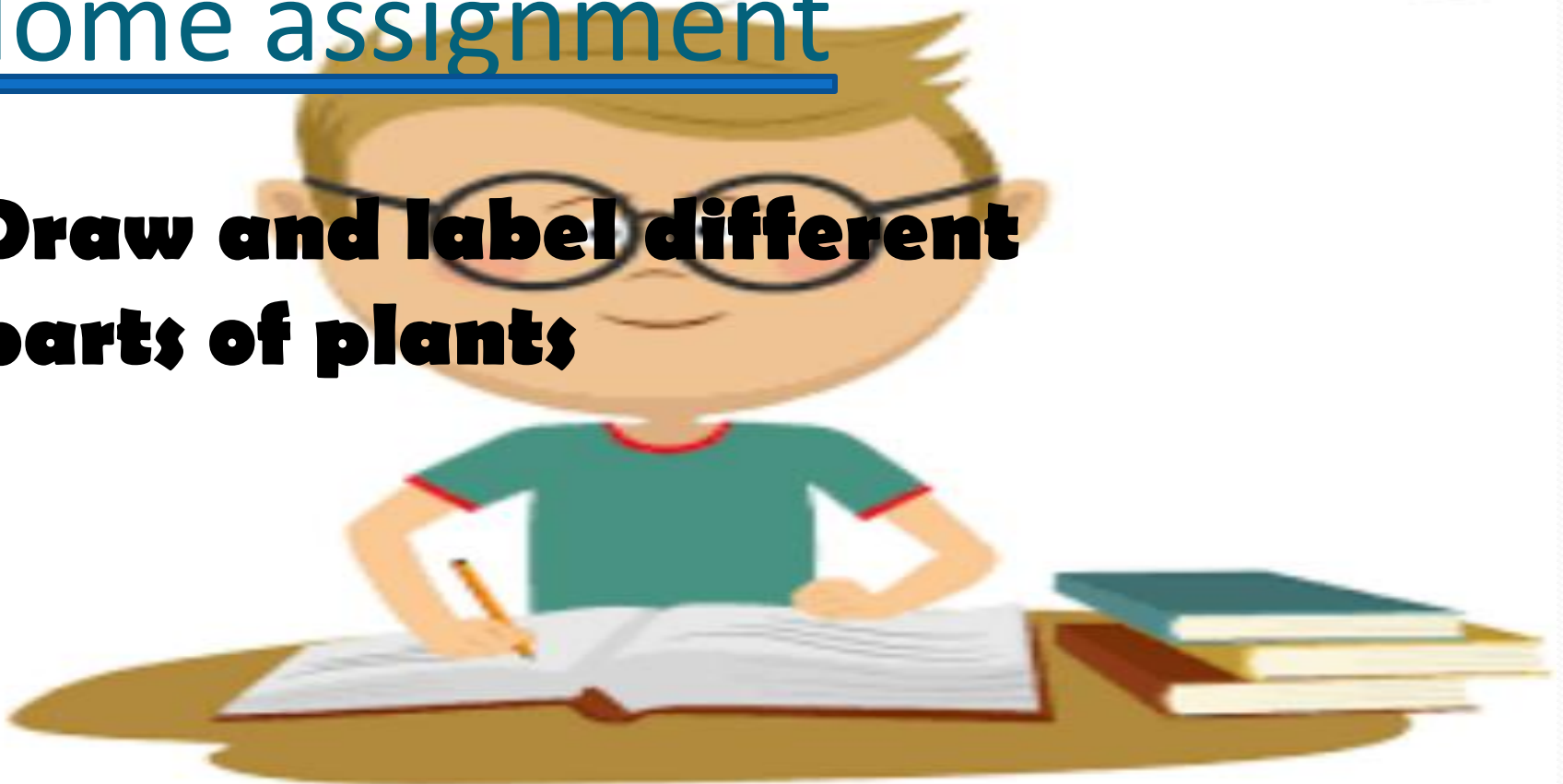
**It grows into a fruit.**



**It stores seeds.**

# Home assignment

**Draw and label different parts of plants**



# Classification of Plant

Plants have been broadly divided into:



Tree



Herb



Shrub



Climber



Creeper



# Classification of Plant



Tree

Trees have many branches with fruits, leaves and flowers. The biggest plant among all is a tree.

**Example :** Neem tree, Peepal tree, Mango tree, and Banyan tree etc.



# Classification of Plant



Herb

Plants with green and thin stems are called Herbs They are small in size.

**Example :** Sunflower plant, Wheat plant, Rice plant and Tomato plant



# Classification of Plant



Shrub

Plants with woody stem are called shrubs.  
These plants look like bushes.

**Example :** Cotton, Hibiscus and Rose





# Classification of Plant



climbers

Climbers are plants with soft green weak stems that need support to stand and grow up.

EXAMPLE: pea plant ,bean plant, money plant



Pea



Grapevine



Money Plant

# CREEPERS



Pumpkin  
Plant



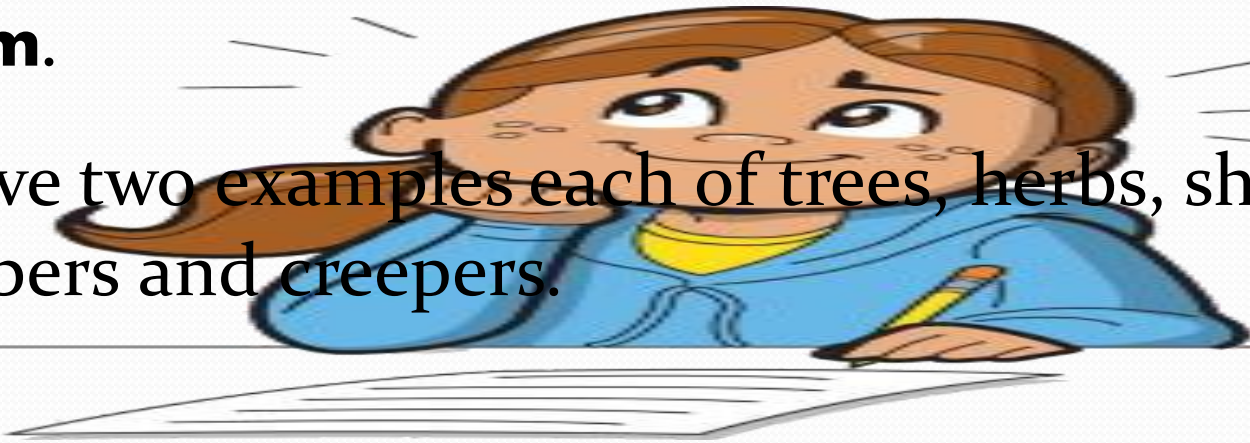
Watermelon  
Plant

Example of creepers are Watermelon plant

# HOME ASSIGNMENT

**1. Cut and paste the picture of herb and shrub. Highlight the important difference between their stem.**

2. Give two examples each of trees, herbs, shrubs, climbers and creepers.



THANK YOU

